

**SUMMARY OF ROAD TRAFFIC CRASH AND CASUALTY SITUATION
PROVISIONAL STATISTICS FOR JANUARY TO JUNE 2023**

A. SUMMARY OF PROVISIONAL NATIONAL ROAD TRAFFIC CRASH AND CASUALTY STATISTICS

I. Provisional National Road Traffic Crashes and Casualties for June 2023/2022 Compared

Table 1: National Provisional Road Traffic Crashes and Casualties for June 2023/2022 Compared

	June 2023	June 2022	Change (Compared to 2022)
Cases Reported	1,189	1,215	(2.14)
Vehicles Involved	1,984	2,390	(16.99)
Persons Killed	186	160	16.25
Persons Injured	1,296	1,377	(5.88)
Pedestrian Knockdowns	197	201	(1.99)

Figure 1: Summary of RTC Situation (June 2023/2022 Compared)

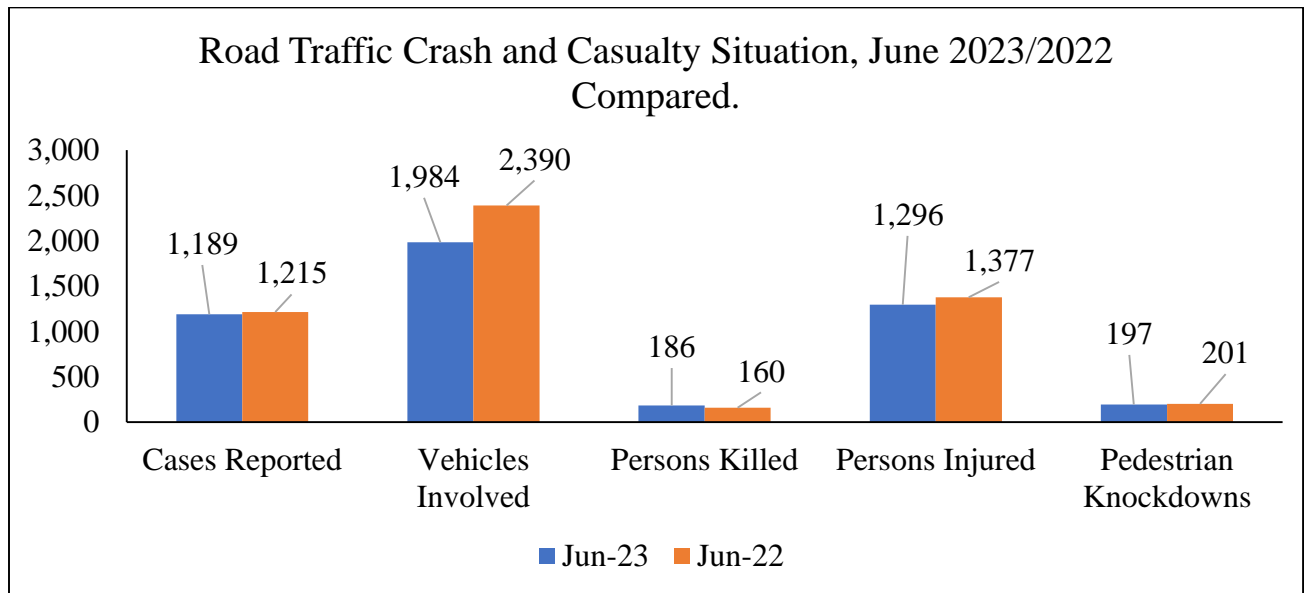
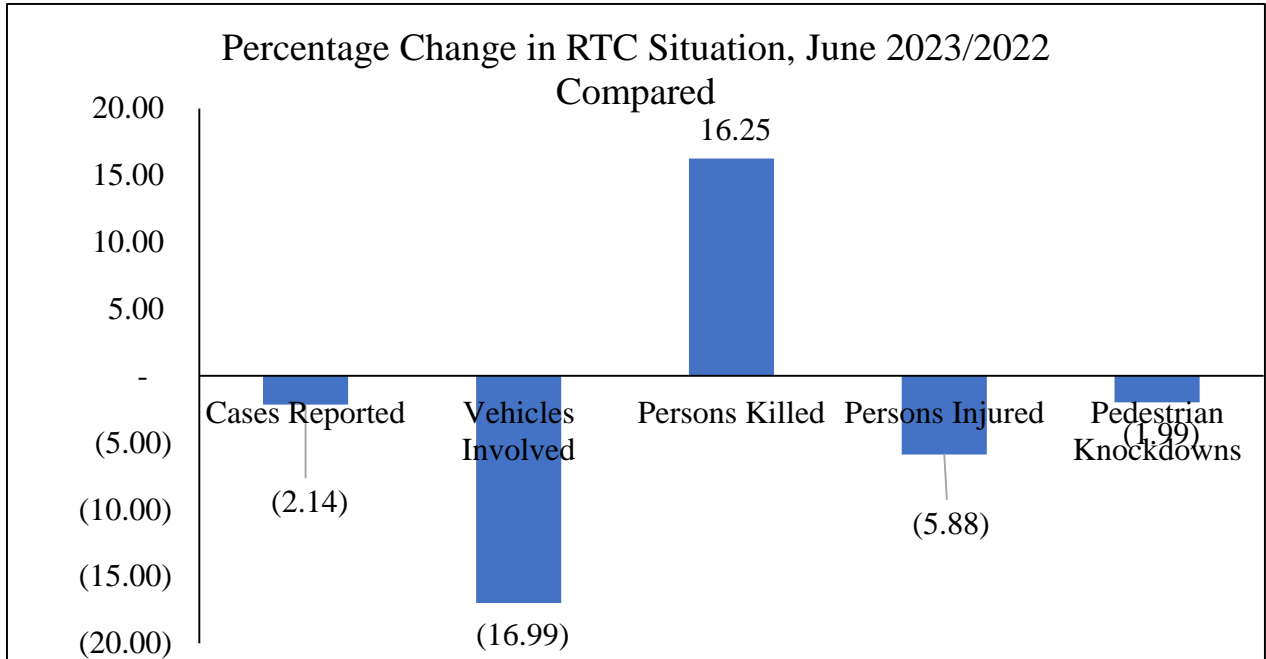


Figure 2: Percentage Change in RTC Situation, June 2023/2022 Compared



A total of 1,189 road traffic crashes were reported in June 2023. These crashes involved 1,984 vehicles of all categories (Private, Commercial, Motorbikes/Cycles, etc.), and 1,482 casualties (186 fatalities/deaths and 1,296 injuries).

As shown in Figure 2 above, Cases Reported, Vehicles Involved, Persons Injured and Pedestrian Knockdowns decreased by 2.14%, 16.99%, 5.88% and 1.99% respectively, whilst Persons Killed increased by 16.25% in June 2023 when compared to the same period of 2022.

II. Provisional National Road Traffic Crashes and Casualties for January to June 2023/2022 Compared

Table 2: National Provisional Road Traffic Crashes and Casualties for January to June 2023/2022 Compared

	January to June 2023	January to June 2022	Change (Compared to 2022)
Cases Reported	6,904	7,687	(10.19)
Vehicles Involved	11,763	13,248	(11.21)
Persons Killed	1,086	1,300	(16.46)
Persons Injured	7,807	8,007	(2.50)
Pedestrian Knockdowns	1,205	1,356	(11.14)

Figure 3: Summary of RTC Situation (January to June 2023)

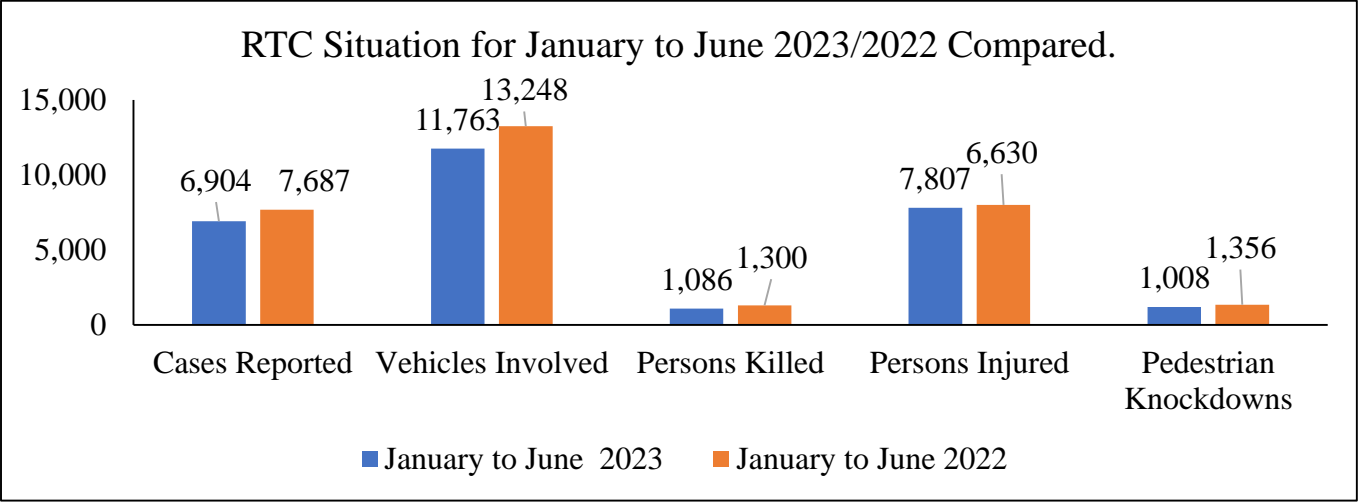
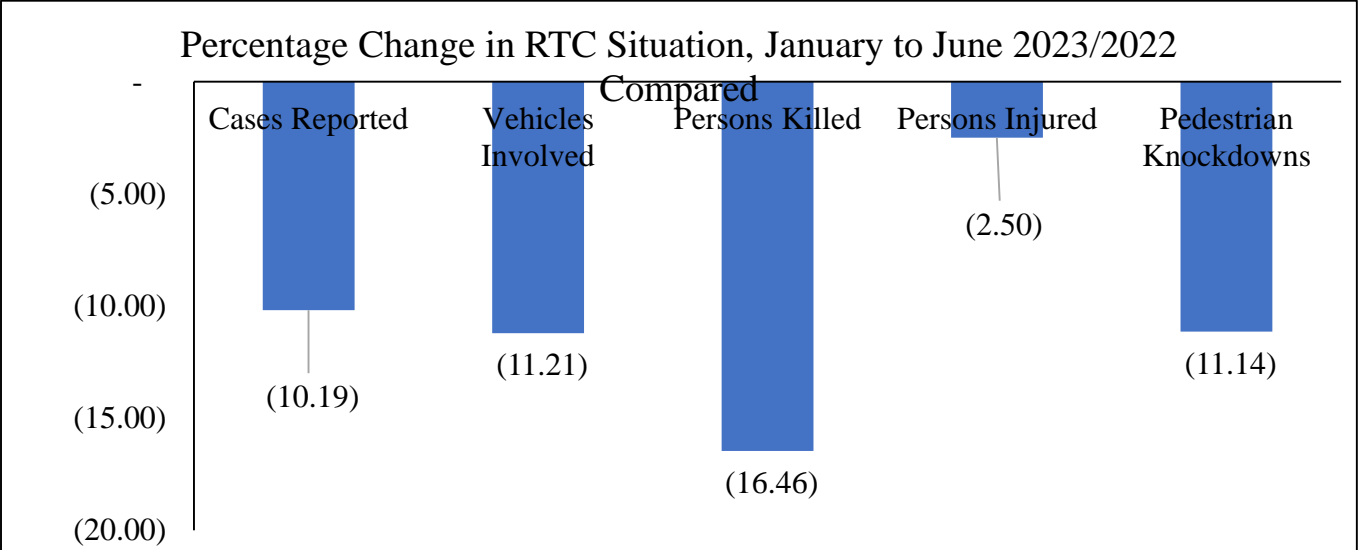


Figure 4: Percentage Change in RTC Situation, January to June 2023/2022 Compared



A total of 6,904 road traffic crashes were reported from January to June 2023. These crashes involved 11,763 vehicles of all categories (Private, Commercial, Motorbikes/Cycles, etc.), and 8,893 casualties (1,086 fatalities/deaths and 7,807 injuries).

As indicated in Figure 4 above, Cases Reported, Vehicles Involved, Persons Killed, Persons Injured and Pedestrian Knockdowns decreased by 10.19%, 11.21%, 16.46%, 2.50% and 11.14% respectively from January to June 2023 when compared to the same period of 2022.

III. Categories of Road Traffic Crashes from January to June 2023

Road Traffic Crashes (RTCs) have been categorized under Fatal, Serious or Minor depending on the severity of the casualties.

Fatal Crashes are crashes which have resulted in the death of at least one (1) person/victim of the crash within 30 days of the crash.

Serious Crashes are crashes which have resulted in a serious injury of at least one (1) person/victim of the crash leading to hospitalization of at least 24 hours.

Minor Crashes are crashes which have resulted in a minor injury of at least one (1) person/victim of the crash leading to hospitalization of less than 24 hours or no injuries at all.

Figure 5: Road Traffic Crash Types for June 2023

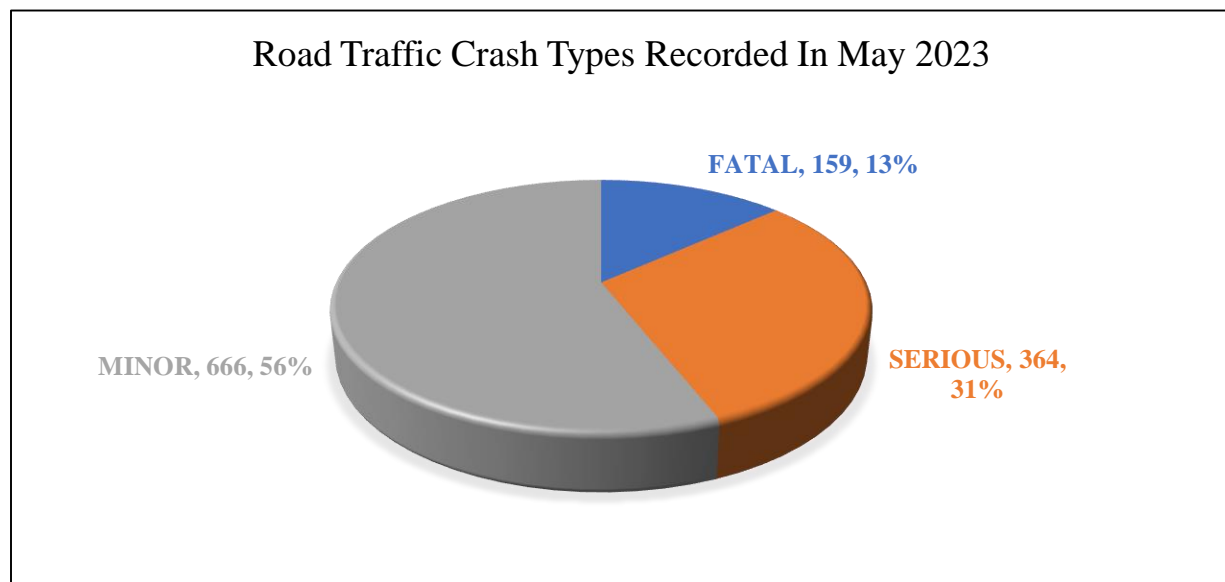
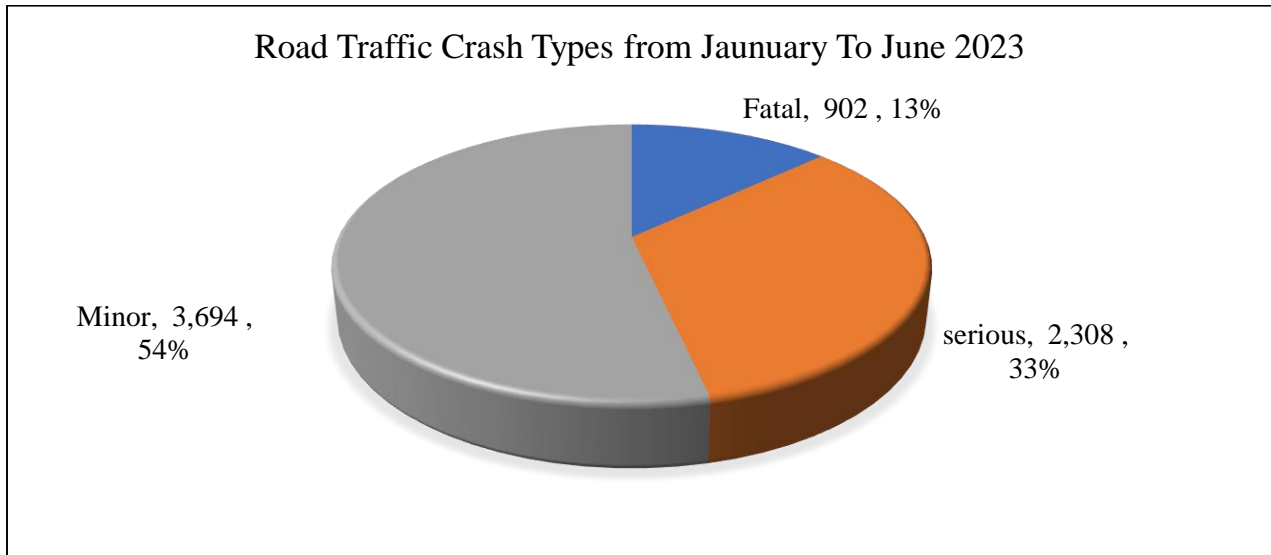


Figure 6: Road Traffic Crash Types from January to June 2023



In the month of June, 56% (666) of the crashes were minor, 31% (364) were Serious Crashes and 13% (159) were Fatal Crashes out of the 1,189 crashes reported.

Similarly, out of the 6,904 road traffic crashes reported from January to June 2023, 54% (3,694) were Minor Crashes, 33% (2,308) were Serious Crashes and the remaining 13% (902) were Fatal Crashes.

IV. Monthly Distributions of Crashes, Injuries and Deaths from January to June 2023/2022

Figure 7: Monthly Distribution in Crashes

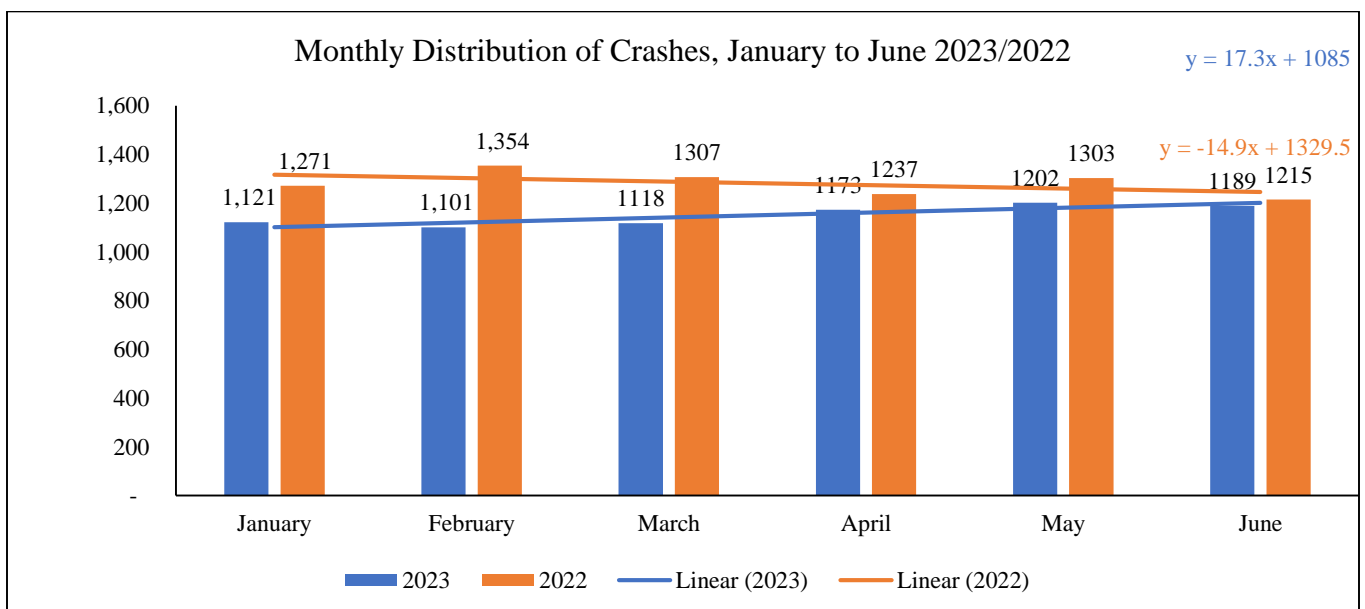
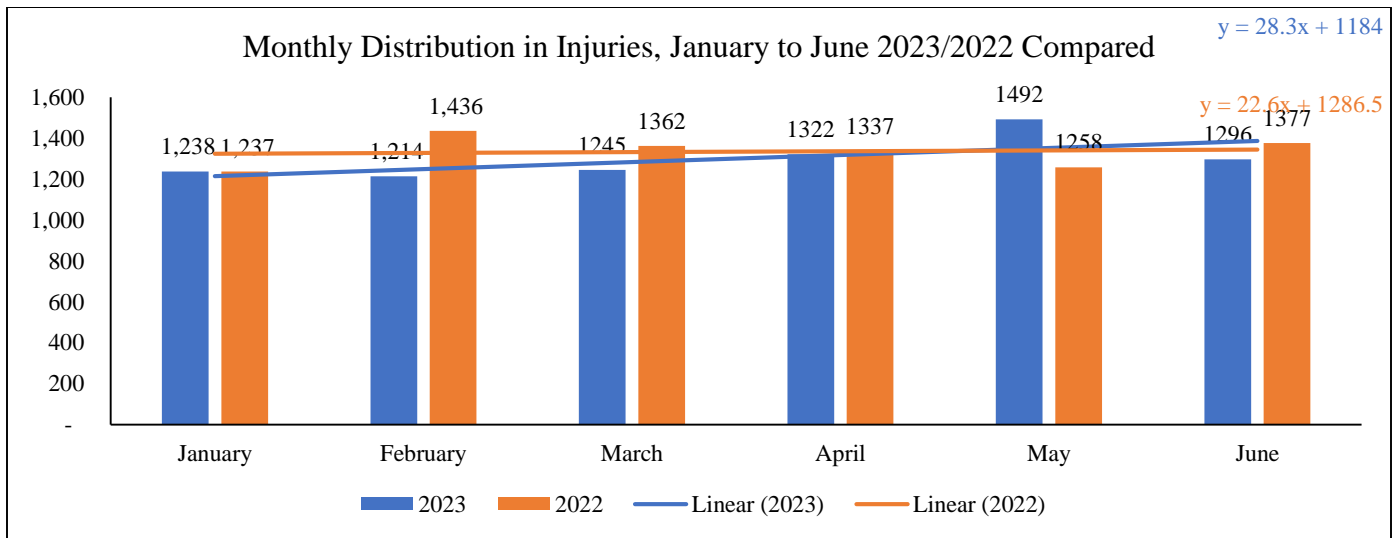


Figure 7 above shows a slight increase in the number of crashes recorded from January to June 2023 whilst the number of crashes from January to June in 2022 remained stable. In 2023, the month of June recorded the highest number of crashes with 1,202 crashes whilst the month of February recorded the least number of crashes with 1,101 crashes.

Figure 8: Monthly Distribution of Injuries



From Figure 8 above, the trend lines indicate a slight increase in the number of injuries recorded from January to June in 2023 as compared to a significant increase in injuries recorded over the 6-month period in 2022. In 2023, the month of June recorded the highest number of injuries with 1,492 injuries whilst the month of June recorded the least number of injuries with 1,296 injuries.

Figure 9: Monthly Distribution in Deaths

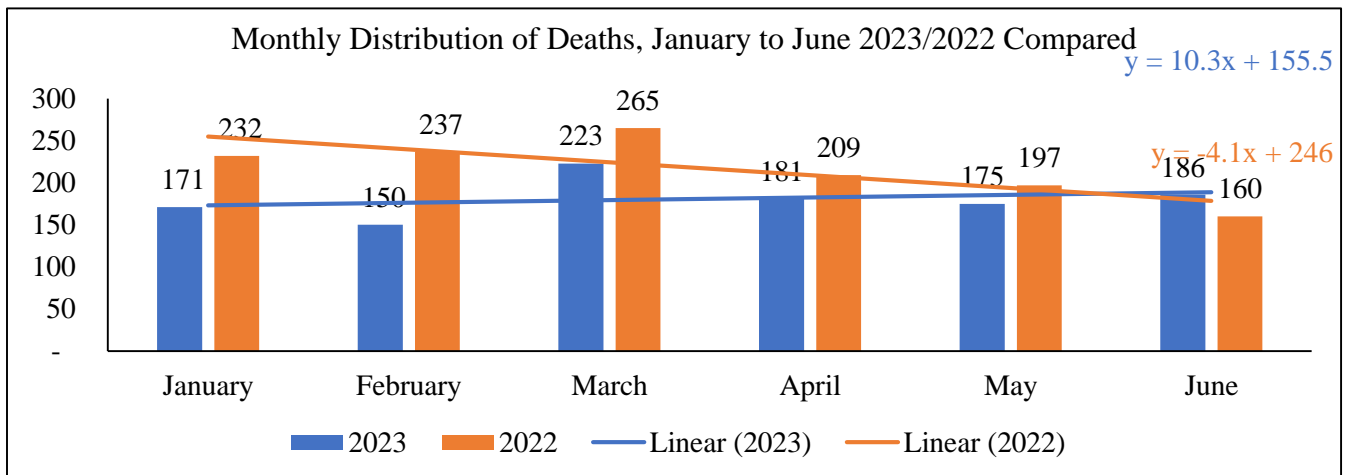


Figure 9 above shows an increasing trend in the number of deaths recorded from January to June 2023 and a decreasing trend in the number of deaths for the same period in 2022. The rate of increase for 2023 is approximately 10 deaths per month compared to the rate of decrease for 2022 which is 4 deaths per month as shown in the trend lines above.

V. Monthly Distribution of Pedestrian Knockdowns

Figure 10: Monthly Distribution of Pedestrian Knockdowns 2023/2022 Compared

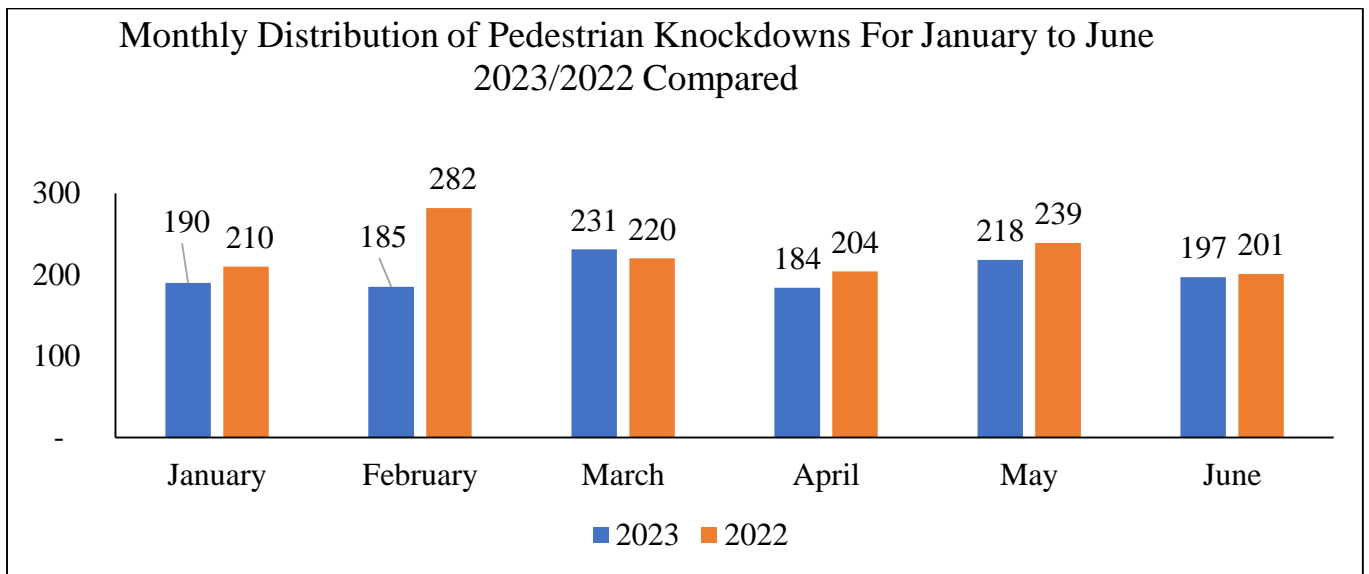


Figure 10 above presents brief analyses of pedestrian related crashes from January to June 2023 compared to 2022. A total of 1,205 pedestrians were knocked down from January to June 2023. This represents a decrease of 11.14% over the situation for the same period in 2022 (1,356 knockdowns).

VI. Distribution of Fatalities by Age

Figure 11: Distribution of Fatalities by Age for June 2023 only and from January to June 2023

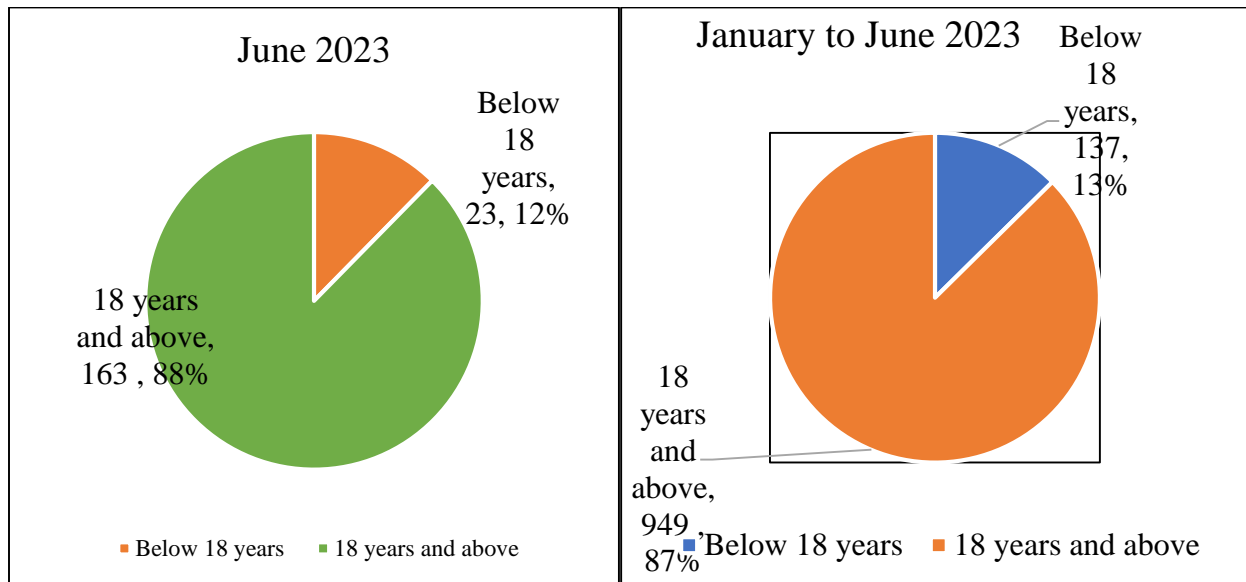


Figure 11 above presents a distribution of road traffic fatalities by Age.

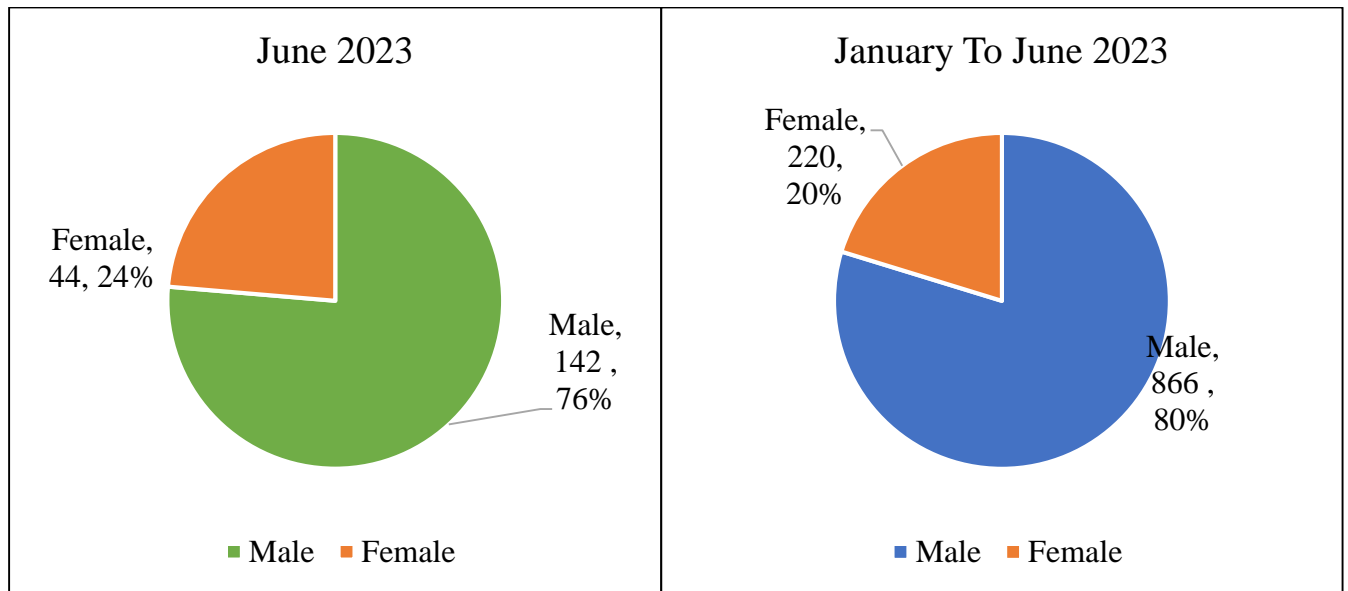
As shown in Figure 11, in the month of June, 23 (12%) persons killed were below 18 years whilst 163 (88%) were reported to have been adults (above) 18 years.

Likewise, from January to June, 137 (13%) persons killed were below the age of 18 years whilst 949 (87%) were reported to have been adults (above 18years).

This indicates that for every seven (7) adults (above 18-years) killed, a child (below 18-years) is killed revealing a relatively high road traffic death ratio (7:1) for adults than for children within the period. This is partly due to the high risk of exposure of adults to traffic incidences as compared to children.

VII. Distribution of Fatalities by Sex

Figure 12: Distribution of Fatalities by Sex



The distribution of road traffic fatalities by Sex in Figure 12 above indicates that in the month of June 2023, 142 (76%) males and 44 (24%) females were killed.

Moreover, 866 (80%) males and 220 (20%) females were killed from January to June 2023. The data reveals a ratio of 1:4, thus, for every 1 female killed, 4 males are killed. This shows a similar trend in past years of higher fatalities for males than for females.

VIII. Distribution of Road Traffic Crashes by Transport Means

Figure 13: Distribution of Road Traffic Crashes by Transport Means from January to June 2023

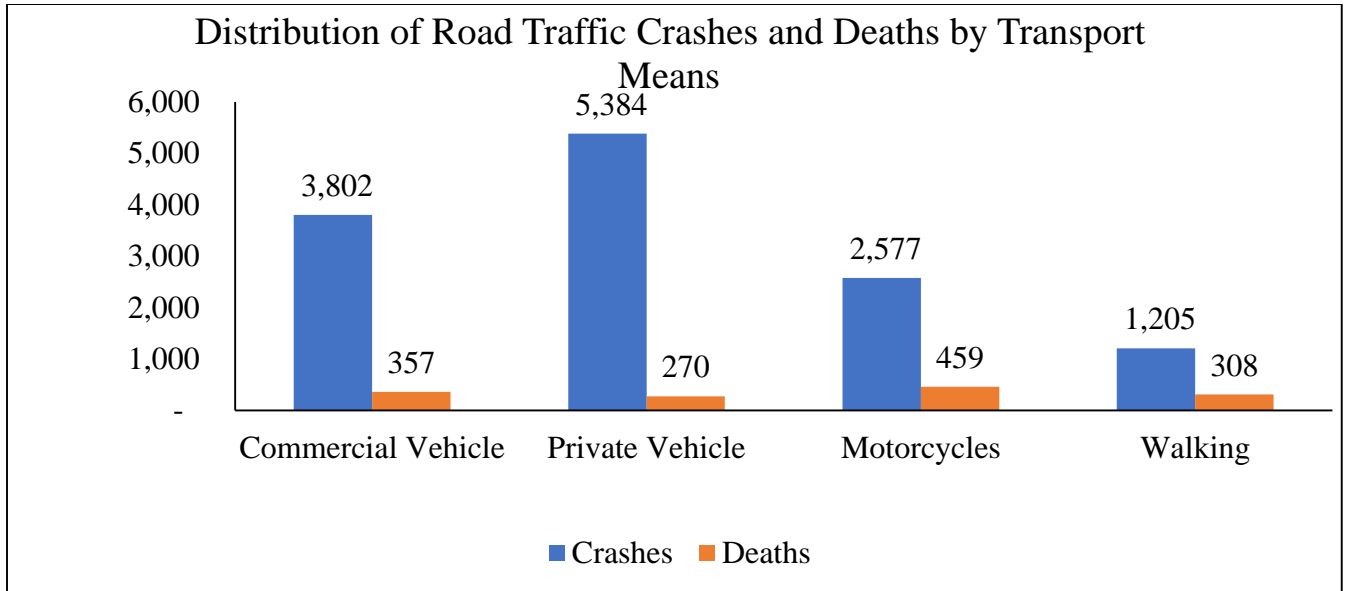


Figure 13 above shows the distribution of road traffic crashes involving means of Transport such as Commercial, Private and Motorcycles (M/Cycles) from January to June 2023.

A total of 3,802 Commercial Vehicles were involved in crashes whilst 5,384 Private Vehicles and 2,577 Motorcycles were involved in crashes.

In terms of the casualties resulting from the categories of vehicles involved in crashes, occupants of motorcycles constituted 459 deaths. This was followed by 357 deaths of occupants of Commercial Vehicles, 308 deaths as Pedestrians and 270 deaths as occupants of Private Vehicles. This implies that motorcyclists and their pillion riders are more exposed to road traffic deaths than other road user groups such as commercial passengers, private vehicle occupants and pedestrians.

IX. Vehicles Involved in Crashes in June 2023

Table 3: Categories of Vehicles Involved in Crashes

Category	Jun-23	Proportion of Vehicles involved in crashes in 2023	Jun-22	Proportion of Vehicles involved in crashes in 2022	% Change based on 2022
Commercial	684	34.48	950	39.75	(28.00)
Private	878	44.25	989	41.38	(11.22)
Motorcycle	422	21.27	451	18.87	(6.43)
Total	1,984	100.00	2,390	100.00	

Figure 14: Categories of Vehicles Involved in Crashes for June 2023

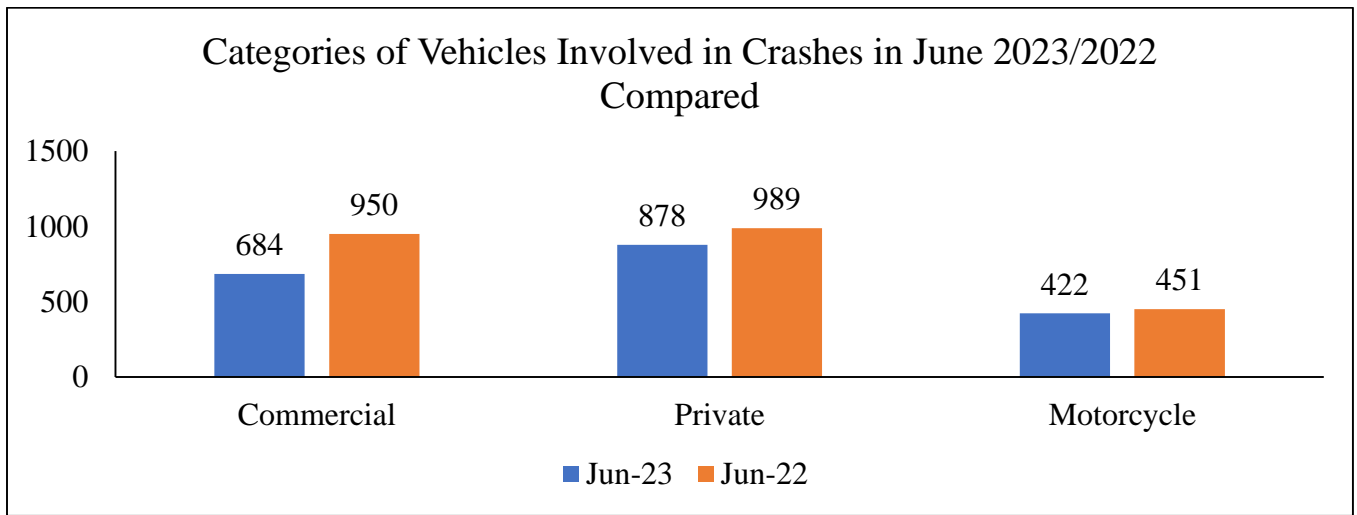


Figure 14 and Table 3 above, show that Private Vehicles constituted the largest proportion of vehicles involved in Crashes in June 2023, representing 44.25%, followed by Commercial Vehicles with 34.48% and Motorcycles with the least proportion of 21.27%. It is worthy to note that Commercial vehicles, Private vehicles and Motorcycles recorded decreases in the numbers involved in crashes in 2023 as compared to 2022. Specifically, Commercial vehicles, Private vehicles and Motorcycles crash involvement reduced by 28%, 11.22% and 6.43% respectively in 2023 when compared to 2022.

X. Vehicles Involved in Crashes from January to June 2023/2022 Compared

For Vehicles Involved, the categories are presented in Table 4 and Figures 15 and 16 below:

Table 4: Categories of Vehicles Involved in Crashes

Category	January to June 2023	Proportion of Vehicles involved in crashes	January to June 2022	Proportion of Vehicles involved in crashes	% Change based on 2022
Commercial	3,802	38.88	4,619	34.87	(17.69)
Private	5,384	55.06	5,862	44.25	(8.15)
Motorcycle	2,577	26.35	2,767	20.89	(6.87)
Total	11,763	100.00	13,248	100.00	(11.21)

Figure 15: Categories of Vehicles Involved in Crashes

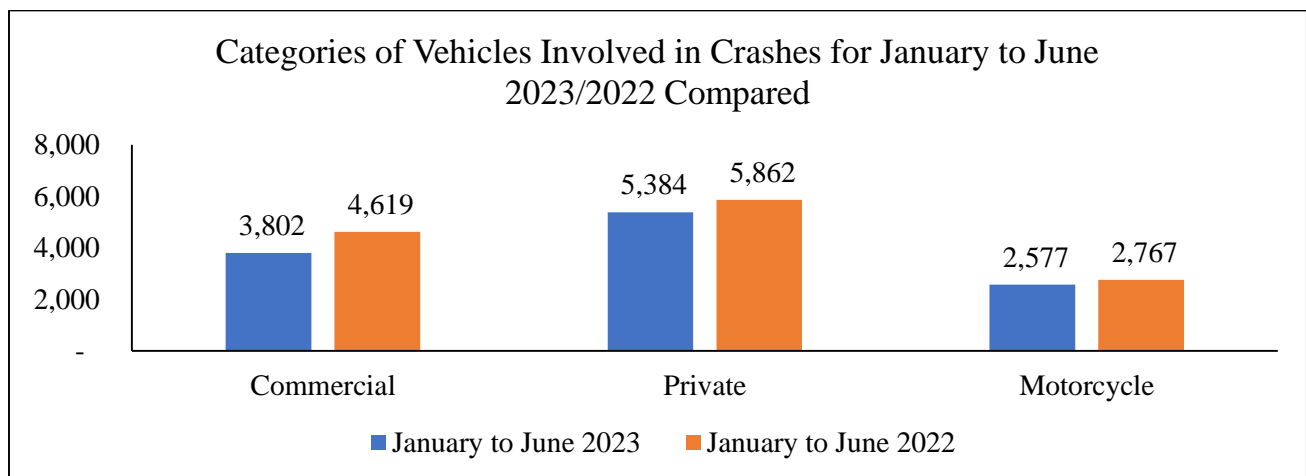
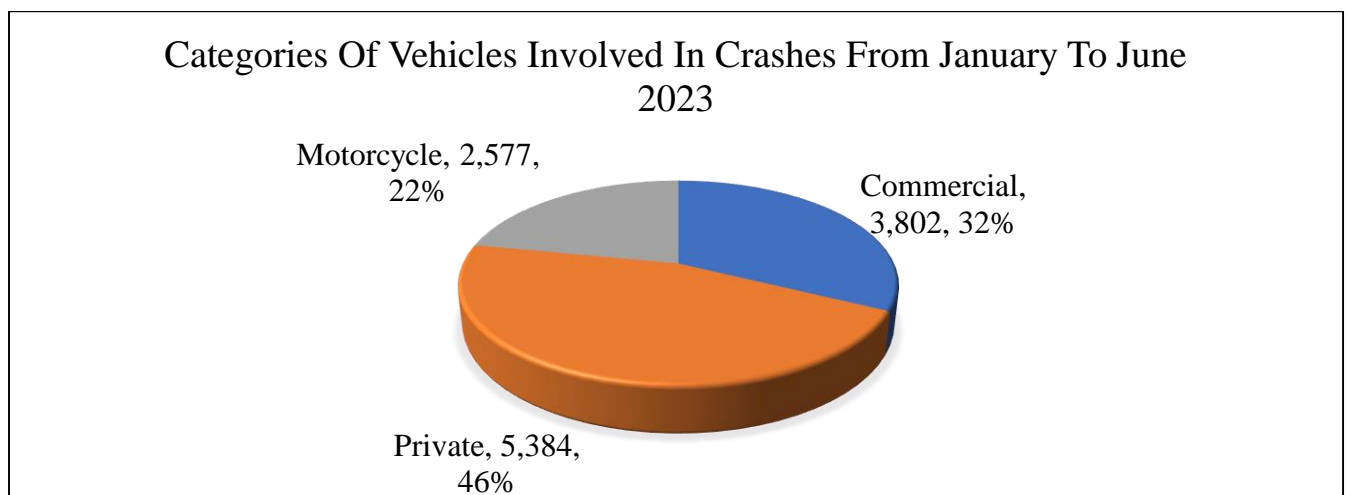


Figure 16: Categories of Vehicles Involved



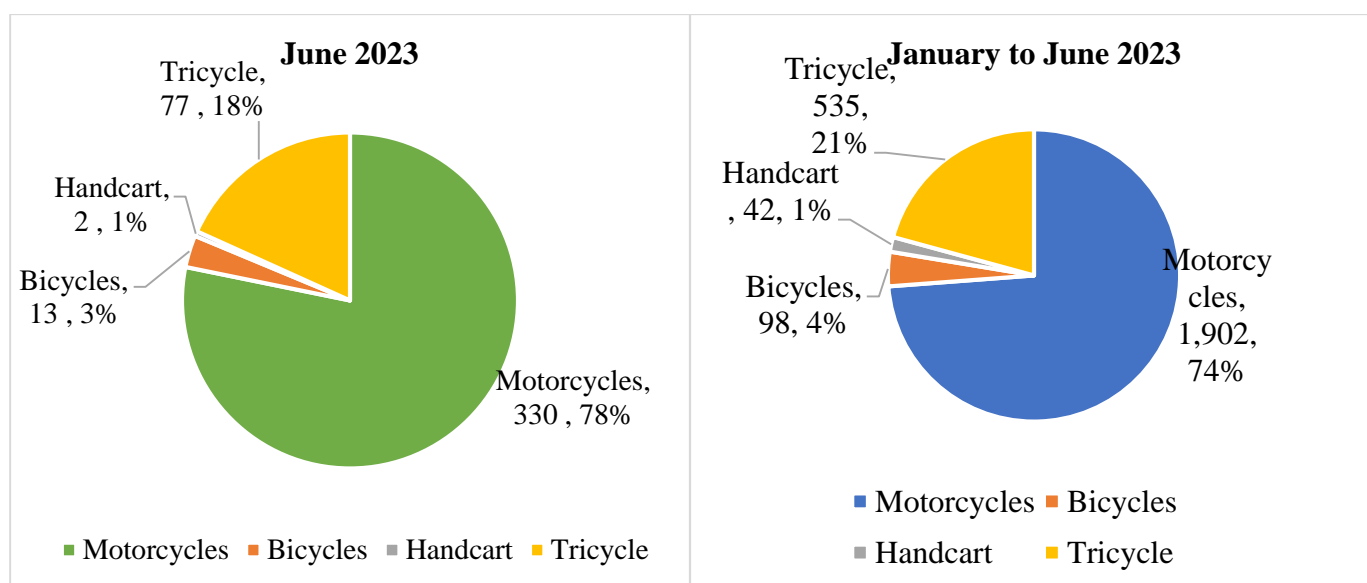
The number of vehicles involved in crashes from January to June 2023 compared to the same period in 2022 is shown in Figures 15 and 16 above.

Private Vehicles constituted the largest proportion of vehicles involved in Crashes from January to June 2023, representing 46%, followed by Commercial Vehicles with 32% and Motorcycles with the least proportion of 22%.

From the table above, the proportions of all the vehicle types involved in crashes, that is, Commercial Vehicles, Private Vehicles and Motorcycles decreased by 15.02%, 7.53% and 6.95% respectively when compared to the same period last year (2022).

XI. Category of Motorcycle/Tricycle Involved in Crashes

Figure 17: Categories of Cycles involved in Crashes



In June 2023, motorbikes (only 2 wheelers) constituted 78 (330) % of crashes involving all cycles whilst tricycles (3 wheelers) contributed 18% (77), followed by Bicycles and handcarts constituting 3% (13) and 1% (2) respectively.

Cumulatively, from January and June 2023, there was a general reduction of 6.43% in crash involvement for all types of motorcycles as indicated in Table 4 above. However, motorbikes (only 2 wheelers) constituted 74% of crashes involving all cycles whilst tricycles contributed 21%. Bicycles and handcarts constituted 4% and 1% respectively.

Analyses on categories of Vehicles Involved in crashes shows that motorcycles (Two/Three wheelers) constituted the least (22%) of all vehicles involved. This notwithstanding, the share of motorbike/motorcycle crashes is alarming taking into consideration the population of motorcycles (two/three wheelers) of the total vehicle population.

SUMMARY OF REGIONAL ROAD TRAFFIC CRASH STATISTICS

XII. Regional Distribution of Crashes, Injuries and Deaths for June 2023

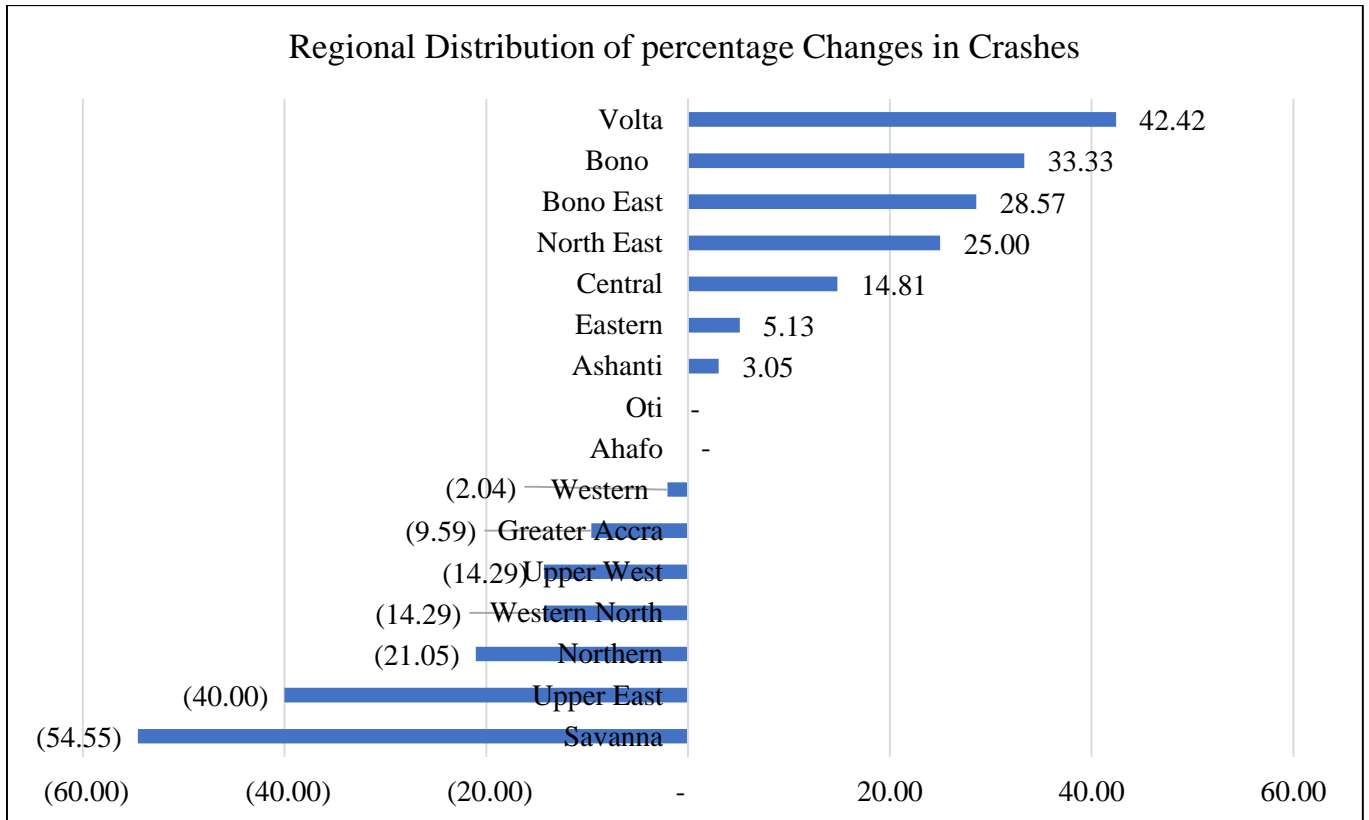
a. Crashes Recorded for June 2023/2022 Compared

Table 5 and Figure 18 below present the Regional Distribution of percentage changes in Crashes for June 2023/2022 compared.

Table 5: Percentage Changes in Crashes for June 2023/2022 Compared

Distribution of Crashes by Regions in June 2023/2022 Compared				
Regions	June 2023	June 2022	Change	% Change
Savanna	5	11	-6	(54.55)
Upper East	9	15	-6	(40.00)
Northern	15	19	-4	(21.05)
Western North	18	21	-3	(14.29)
Upper West	6	7	-1	(14.29)
Greater Accra	481	532	-51	(9.59)
Western	48	49	-1	(2.04)
Ahafo	15	15	0	0
Oti	3	3	0	0
Ashanti	304	295	9	3.05
Eastern	123	117	6	5.13
Central	93	81	12	14.81
North East	5	4	1	25.00
Bono East	9	7	2	28.57
Bono	8	6	2	33.33
Volta	47	33	14	42.42
Total	1,189	1,215	-26	(2.14)

Figure 18: Percentage Changes in Crashes for June 2023/2022 Compared



From Figure 18 above, Volta, Bono, Bono East, North East, Central, Eastern and Ashanti regions recorded increases in Crashes by 42.4%, 33.3%, 28.6%, 25%, 14.8%, 5.13%, and 3.1% respectively in June 2023 compared to the same period of 2022. Oti and Ahafo regions recorded no changes and the remaining regions recorded decreases over the same period with Savannah Region had the highest percentage decrease by 54.5%.

b. Injuries Recorded for June 2023/2022 Compared

Table 6 and Figure 19 below present the percentage changes in Injuries for June 2023/2022 Compared.

Table 6: Percentage Changes in Injuries for June 2023/2022 Compared

Distribution of Injuries by Regions in June 2023/2022 Compared				
Regions	June 2023	June 2022	Change	% Change
Bono East	10	27	-17	(62.96)
Savanna	9	24	-15	(62.50)
Northern	16	38	-22	(57.89)
Upper East	9	21	-12	(57.14)
Ahafo	15	27	-12	(44.44)
Upper West	5	8	-3	(37.50)
Ashanti	340	406	-66	(16.26)
Eastern	313	363	-50	(13.77)
Western	46	43	3	6.98
Greater Accra	288	259	29	11.20
Central	147	112	35	31.25
Western North	52	35	17	48.57
North East	3	2	1	50.00
Volta	33	10	23	230.00
Bono	9	2	7	350.00
Oti	1	-	1	Undefined
Total	1,296	1,377	-81	(5.88)

Figure 19: Percentage Change in Injuries for June 2023/2022 Compared

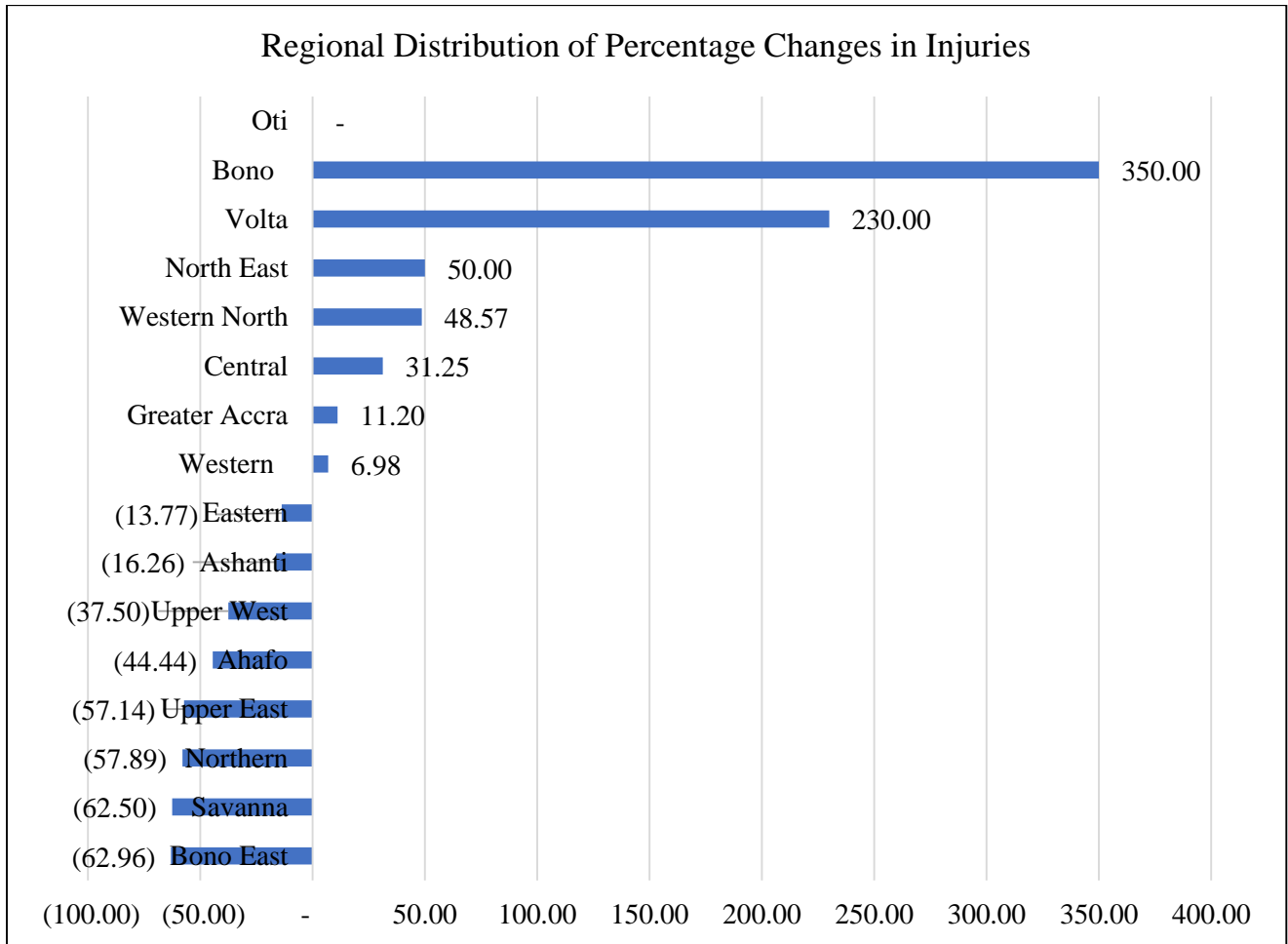


Figure 19 above illustrates the percentage changes in Injuries sustained in Road Traffic Crashes in June 2023 compared to the same period of 2022. Bono Region had the highest percentage increase of 350% followed by Volta Region with 230% increase. Bono East Region recorded the highest decrease in Injuries sustained by 63% in the number of injuries sustained within the period.

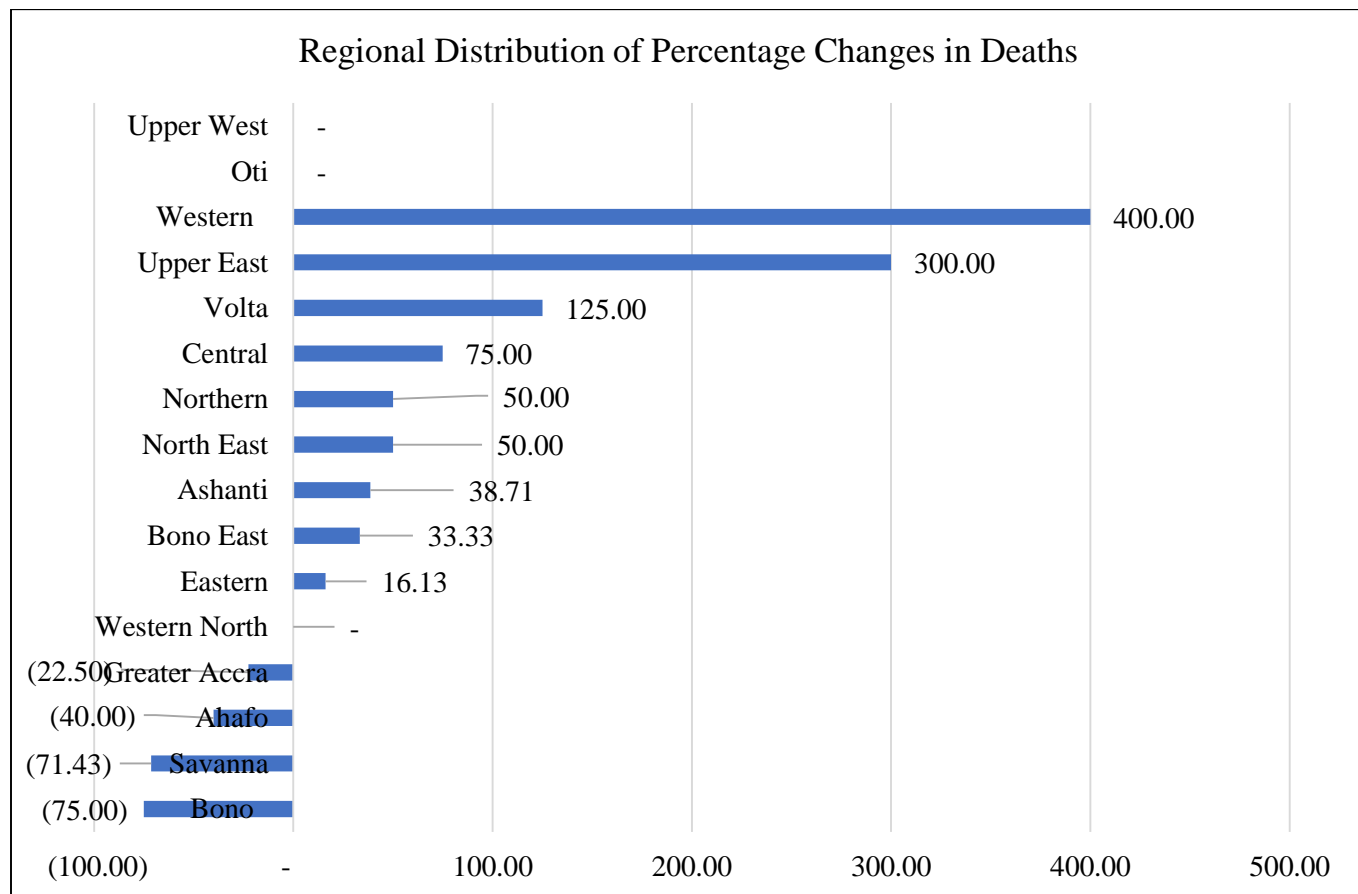
c. Deaths Recorded for June 2023/2022 Compared

Table 7 and Figure 20 below present the percentage changes in Deaths for June 2023/2022 compared.

Table 7: Percentage Changes in Deaths for June 2023/2022 Compared

Distribution of Deaths by Regions in June 2023/2022 Compared				
Regions	June 2023	June 2022	Change	% Change
Bono	1	4	-3	(75.00)
Savanna	2	7	-5	(71.43)
Ahafo	9	15	-6	(40.00)
Greater Accra	31	40	-9	(22.50)
Western North	6	6	0	0
Eastern	36	31	5	16.13
Bono East	4	3	1	33.33
Ashanti	43	31	12	38.71
North East	6	4	2	50.00
Northern	6	4	2	50.00
Central	14	8	6	75.00
Volta	9	4	5	125.00
Upper East	4	1	3	300.00
Western	10	2	8	400.00
Oti	3	0	3	Undefined
Upper West	2	0	2	Undefined
Total	186	160	26	16.25

Figure 20: Percentage Change in Deaths for June 2023/2022 Compared.



Western Region had highest percentage increase in deaths in June 2023 with 400% when compared to the same period of 2022, followed by Upper East, Volta, Central Northern, North East, Ashanti, Bono East and Eastern regions with 300%, 125%, 75% 50%, 50%, 38.7%, 33.3%, and 16.3% respectively. Western Region recorded no change and the remaining regions had decreases, with Bono Region recording the highest percentage decrease by 75%.

XIII. Regional Distribution of Crashes and Deaths from January to June 2023

Figure 21: Regional Distribution of Crashes from January to June 2023

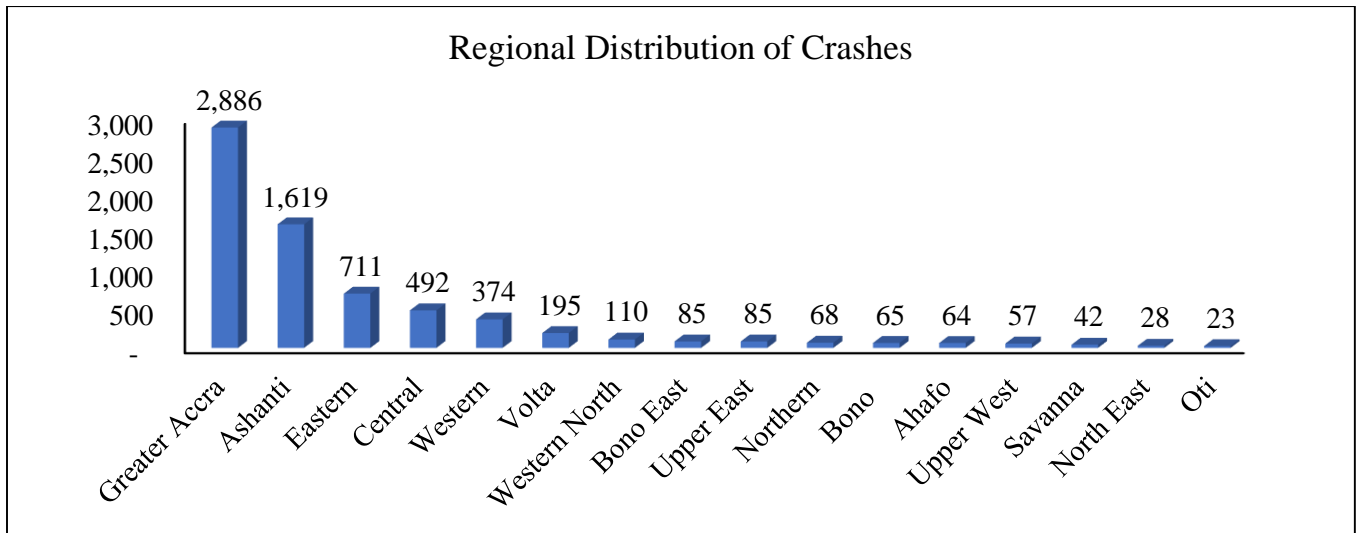
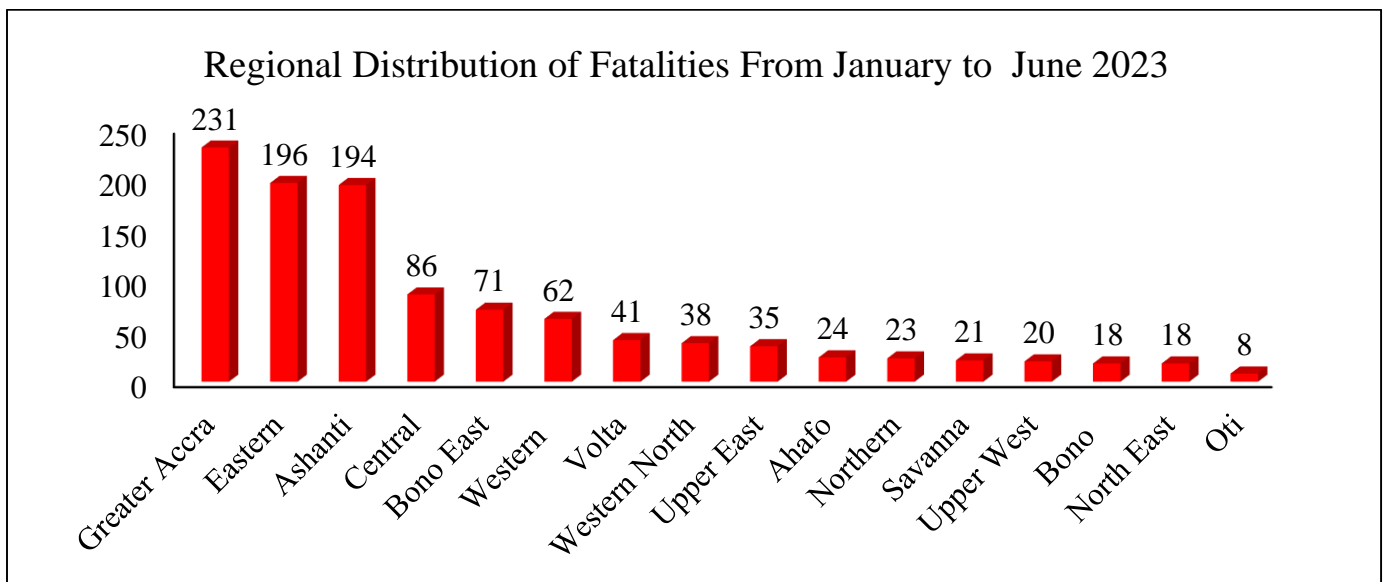


Figure 22: Contribution of Regions to National Fatality from January to June 2023



Figures 21 and 22 above present the distribution of crashes and fatalities by regions in absolute terms for January to June 2023. Greater Accra Region contributed the most to crashes and fatalities (2,886 and 231 respectively). This was followed by Ashanti (1,619; 194). Even though Eastern Region came third in the number of crashes with 711 crashes, it came second in the number of deaths with 196 deaths.

XIV. Regional Distribution of Crashes, Injuries and Deaths from January to June 2023

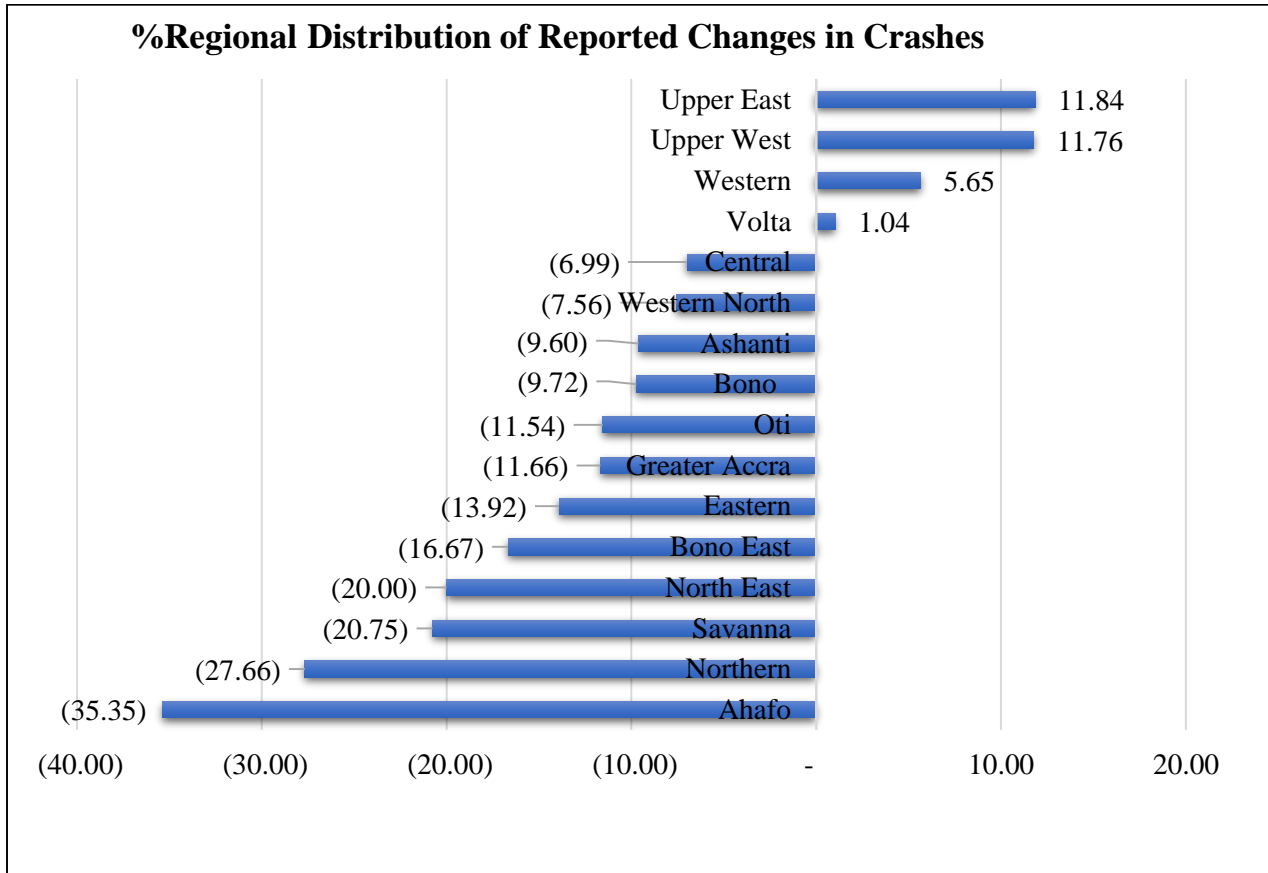
a. Crashes Recorded, January to June 2023/2022 Compared

Table 8 and Figure 23 below present the Regional Distribution of percentage changes in Crashes from January to June 2023/2022 compared.

Table 8: Percentage Changes in Crashes January to June 2023/2022 Compared

Distribution of Crashes by Regions in from January to June 2023/2022 Compared				
Regions	January to June 2023	January to June 2022	Change	% Change
Ahafo	64	99	-35	(35.35)
Northern	68	94	-26	(27.66)
Savanna	42	53	-11	(20.75)
North East	28	35	-7	(20.00)
Bono East	85	102	-17	(16.67)
Eastern	711	826	-115	(13.92)
Greater Accra	2,886	3,267	-381	(11.66)
Oti	23	26	-3	(11.54)
Bono	65	72	-7	(9.72)
Ashanti	1,619	1,791	-172	(9.60)
Western North	110	119	-9	(7.56)
Central	492	529	-37	(6.99)
Volta	195	193	2	1.04
Western	374	354	20	5.65
Upper West	57	51	6	11.76
Upper East	85	76	9	11.84
Total	6,904	7,687	-783	(10.19)

Figure 23: Percentage Changes in Crashes from January to June 2023/2022 Compared



From Figure 23 above, Upper East, Upper West, Western, and Volta Regions recorded increases in crashes by 11.84%, 11.76%, 5.65% and 1.04% respectively from January to June 2023 compared to the same period of 2022. The remaining regions recorded decreases over the same period and Ahafo Region had the highest percentage decrease with 35.4%.

b. Injuries Recorded, January to June 2023/2022 Compared

Table 9 and Figure 24 below present the percentage changes in Injuries from January to June 2023/2022 Compared.

Table 9: Percentage Changes in Injuries from January to June 2023/2022 Compared

Distribution of Injuries by Regions in from January to June 2023/2022 Compared				
Regions	January to June 2023	January to June 2022	Change	% Change
Northern	97	219	-122	(55.71)
Ahafo	96	154	-58	(37.66)
Upper West	69	90	-21	(23.33)
Oti	23	29	-6	(20.69)
Bono	76	95	-19	(20.00)
Upper East	86	100	-14	(14.00)
Eastern	1,527	1,698	-171	(10.07)
Greater Accra	1,676	1,832	-156	(8.52)
Ashanti	2,014	2,094	-80	(3.82)
Western North	206	194	12	6.19
Savanna	152	131	21	16.03
Western	380	317	63	19.87
Volta	168	133	35	26.32
North East	75	57	18	31.58
Central	950	718	232	32.31
Bono East	212	146	66	45.21
Total	7,807	8,007	-200	(2.50)

Figure 24: Percentage Change in Injuries from January to June 2023/2022 Compared

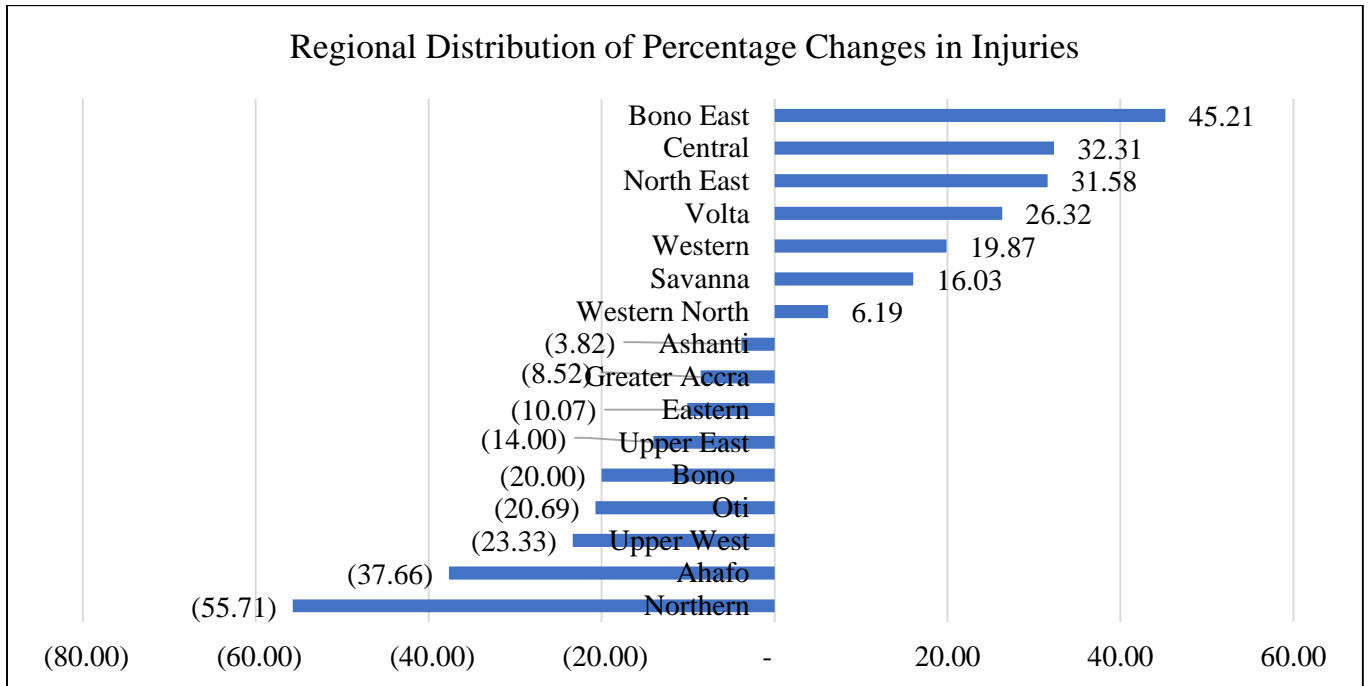


Figure 24 above illustrates the percentage changes in Injuries sustained in Road Traffic Crashes from January to June 2023 compared to the same period of 2022. Bono East Region had the highest percentage increase of 45.2% followed by Central Region with 32.1 % increase. Northern Region recorded the highest decrease in Injuries sustained by 55.7%.

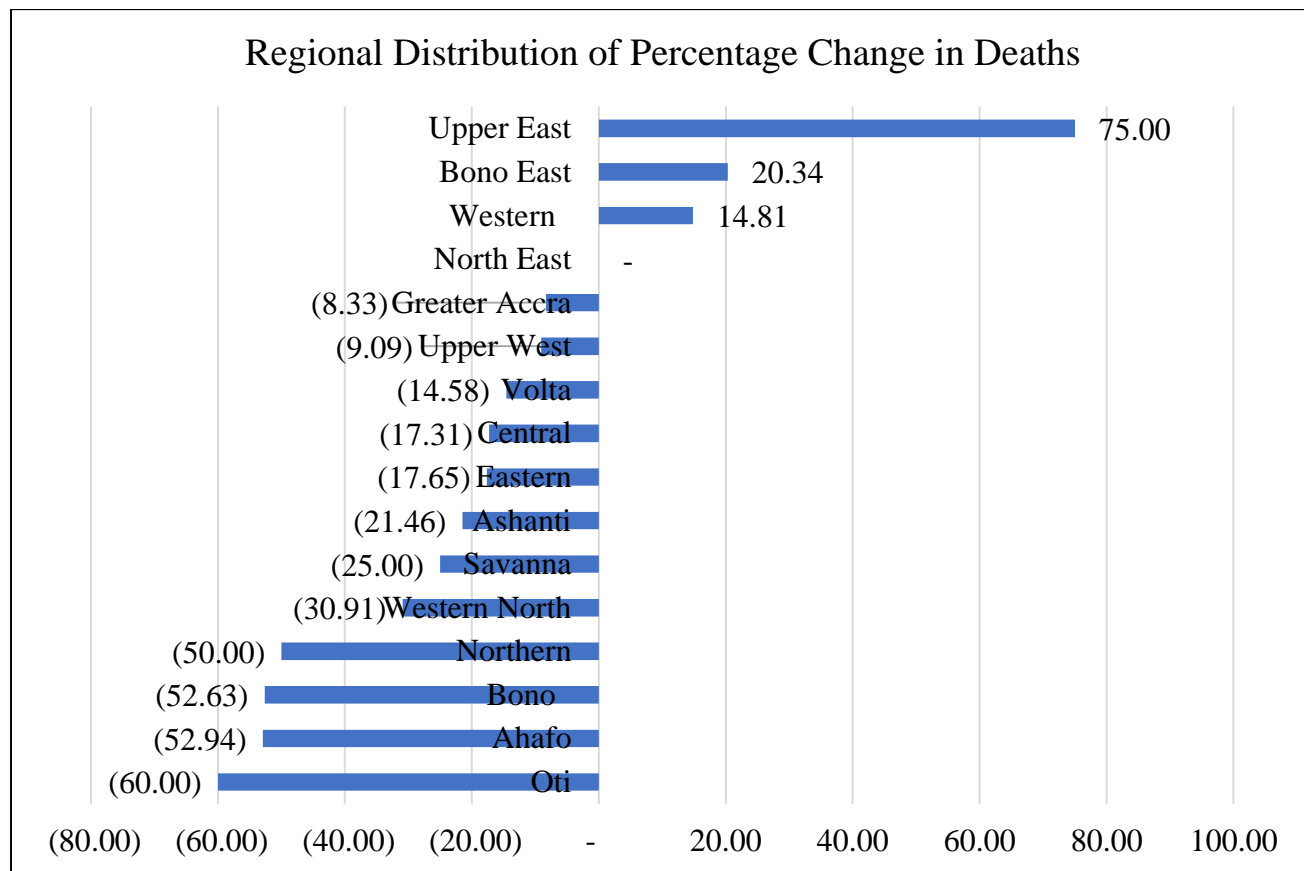
c. Deaths Recorded from January to June 2023/2022 Compared

Table 10 and Figure 25 below present the percentage changes in Deaths from January to June 2023/2022 compared.

Table 10: Percentage Changes in Deaths from January to June 2023/2022 Compared

Distribution of Deaths by Regions in from January to June 2023/2022 Compared				
Regions	January to June 2023	January to June 2022	Change	% Change
Oti	8	20	-12	(60.00)
Ahafo	24	51	-27	(52.94)
Bono	18	38	-20	(52.63)
Northern	23	46	-23	(50.00)
Western North	38	55	-17	(30.91)
Savanna	21	28	-7	(25.00)
Ashanti	194	247	-53	(21.46)
Eastern	196	238	-42	(17.65)
Central	86	104	-18	(17.31)
Volta	41	48	-7	(14.58)
Upper West	20	22	-2	(9.09)
Greater Accra	231	252	-21	(8.33)
North East	18	18	0	0
Western	62	54	8	14.81
Bono East	71	59	12	20.34
Upper East	35	20	15	75.00
Total	1086	1300	-214	(16.46)

Figure 25: Percentage Change in Deaths from January to June 2023/2022 Compared.



Upper East, Bono East and Western Regions had increases in deaths from January to June 2023 with 75%, 20.3% and 14.8%, respectively when compared to the same period of 2022. North East Region recorded no change and the remaining regions had decreases, with Oti Region recording the highest percentage decrease of 60%.

XV Conclusion

Generally, there have been reductions in all major indicators for June 2023 except the number of persons killed which increased by 16.25%. Similarly, January to June 2023 recorded decreases in all major indicators compared with the same period in 2022. It can therefore be concluded that the outlook for Crashes, Injuries and Deaths (CIDs) for the period under review is positive. Moreover, among the major indicators; Crashes, Injuries, Deaths, Vehicles Involved, Persons Injured and Pedestrian Knockdowns, fatalities/deaths realized the widest margin of decline (16.5%) for the period January to June 2023.

It is also worthy to note that the number of Private Vehicles involved in crashes has seen a consistent decline in its crash involvement which hitherto was recording increases in crash involvement compared to Commercial Vehicles and Motorcycles.

The significant margin of decrease in deaths/fatalities recorded in the January to June of 2023 (16.5%) could be largely attributed to the level of reductions recorded in crashes in Greater Accra (11.5%), Ashanti (9.6%) and Eastern (11.6%) regions which together usually constitute 76% of all crashes in the country.

Consequently, this development positively influenced the number of deaths as witnessed in a reduction of 8.3%, 21.5% and 17.7% in the Greater Accra, Ashanti and Eastern regions respectively.

Measures should therefore be sustained in these strategic regions to help reduce the numbers at the nation level.